

Rhode Island Manufacturing Facts

nam.org/statedata • mfgdata@nam.org

Manufacturers in Rhode Island account for 7.6 percent of the total output in the state, employing 8.8 percent of the workforce. Total output from manufacturing has hovered around \$4 billion for the past several years (see figure). In addition, manufacturing compensation is nearly 37 percent higher than other nonfarm employers in the state.

Manufacturing Output and Exports

Rhode Island Total Manufacturing Output (\$billions, 2009)	\$3.6
Manufacturing's Share of Total Gross State Product (2009)	7.6%
Manufacturing Establishments in Rhode Island (2009)	1,625
Manufacturing's Share of Rhode Island's Exports (2010)	70%
Total Employment Related to Manufactured Exports (2008)	15,100

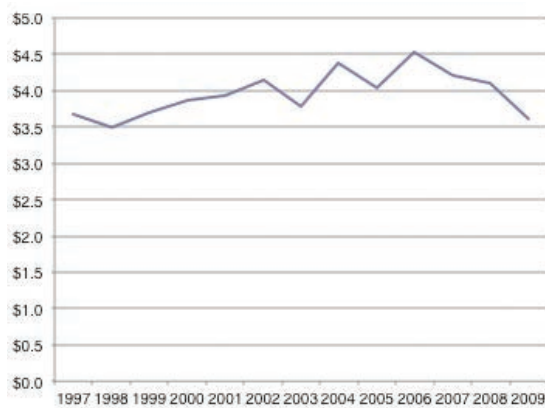
Source: U.S. Bureau of Economic Analysis

Employment and Compensation

Manufacturing Employment (2010)	40,300
Manufacturing Employment (% of Overall Nonfarm) (2010)	8.8%
Average Annual Compensation in Manufacturing (2009)	\$62,010
Average Annual Compensation in Nonfarm Sectors (2009)	\$45,289
Manufacturing Pay Premium (as a % of Nonfarm) (2009)	\$16,721 (36.9%)

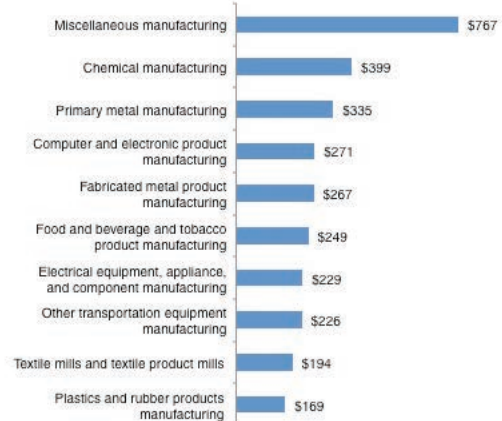
Sources: U.S. Bureau of Economic Analysis, U.S. Bureau of Labor Statistics

Rhode Island Manufacturing Output (Billions of Dollars, from 1997-2009)



Source: U.S. Bureau of Economic Analysis

Top 10 Rhode Island Manufacturing Sectors (in Millions of Dollars, in 2009)



Source: U.S. Bureau of Economic Analysis

Rhode Island Benefits from Exports!

Manufactured goods exports are one of the strongest parts of Rhode Island's economy even though Rhode Island and other states export only half as much of their production as the world average. America's exports and the related jobs could double if Congress passes strong pro-export legislation.

- **Manufactured exports support 18 percent of Rhode Island's manufacturing jobs.**
- **Since 2003, Rhode Island manufacturing exports rose 60 percent faster than the state's overall economy.**
- **89 percent of Rhode Island exporters are small businesses (2009).**
- **Rhode Island exported \$591 million of manufactured goods to Free Trade Agreement (FTA) partner countries in 2010 – 43 percent of Rhode Island's total.**

Rhode Island Trade Statistics

Manufactured Goods Exports, 2010 (billions)	\$1.4
Total Jobs in all Sectors Supported by Manufactured Goods Exports	15,100
Export Share of Manufacturing Jobs	18%
2003-2010 Growth of Manufactured Goods Exports	33%

Manufactured Exports Drive Rhode Island's Economy

- Manufacturing accounts for 70 percent of Rhode Island's exports (2010).
- Since 2003, Rhode Island manufacturing exports grew 33 percent while the national average was a 70 percent increase.
- Manufactured exports support 18 percent of Rhode Island's manufacturing jobs (U.S. average is 22 percent).

Rhode Island Manufacturers Are Engaged in Exporting around the World

- Top five U.S. export markets: 47 percent of Rhode Island exports (2010).
- Canada (21%), Mexico (10%), Germany (6%), Singapore (6%) and China (5%).

Chart 1. Rhode Island's Manufactured Goods Exports

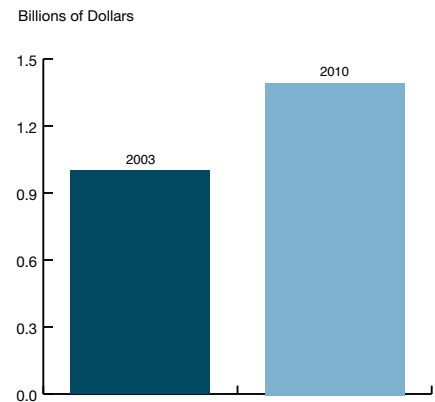
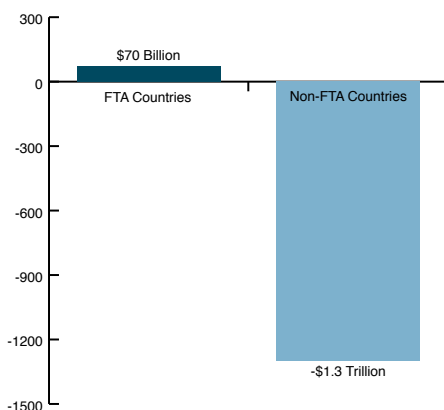


Chart 2. U.S. Manufacturing Trade Balance (2008-2010) FTA Countries Versus Non-FTA Countries



Exporting Is Critical to Rhode Island's Small Businesses

- Small businesses comprise 89 percent of Rhode Island's 1,468 exporters (2009).
- Small businesses average \$616,000 in exports per firm.
- Small businesses account for 51 percent of total state exports.

Additional Trade Facts

- Over the past three years, manufacturers in the U.S. sold \$70 billion more in manufactured goods to our free trade agreement (FTA) partners than we bought from them. The United States had a manufacturing trade deficit of \$1.3 trillion in countries where no FTAs existed (see chart 2).
- FTA countries: Australia, Bahrain, Canada, Chile, Costa Rica, Dominican Republic, El Salvador, Guatemala, Honduras, Israel, Jordan, Mexico, Morocco, Nicaragua, Oman, Peru, Singapore.
- Visit www.nam.org/statedata or www.nam.org/trade. E-mail us at trade@nam.org.

Source: U.S. Department of Commerce. Unless otherwise noted, data reflects 2008.